



INSTRUCTION BULLETIN

No. 9010944
Machine: T12
Published: 06-2013
Rev. 00

NOTE: DO NOT DISCARD the Parts List from the Instruction Bulletin. Place the Parts List in the appropriate place in the machine manual for future reference. Retaining the Parts List will make it easier to reorder individual parts and will save the cost of ordering an entire kit.

NOTE: Numbers in parenthesis () are reference numbers for parts listed in Bill of Materials.

Installation instructions for **kit number 9010353**

SYNOPSIS:

This kit contains the parts needed to install a strobe light / alarm kit on T12 scrubbers.
Please follow step-by-step instructions.

SPECIAL TOOLS / CONSIDERATIONS: NONE

(Estimated time to complete: 2 hours)



PROTECT THE ENVIRONMENT

Please dispose of packaging materials, old machine components, and hazardous fluids in an environmentally safe manner according to local waste disposal regulations.

Always remember to recycle.

PREPARATION:

1. Park the machine on a clean level surface, turn off the machine, and remove the key.

FOR SAFETY: Before leaving or servicing machine, stop on level surface, turn off machine, and remove key.

2. Disconnect the battery cable from the machine.

 **WARNING: Always disconnect battery cables from machine before working on electrical components.**

INSTALLATION:

1. Remove the plugs from the recovery tank cover and discard both plugs. (Fig. 1)

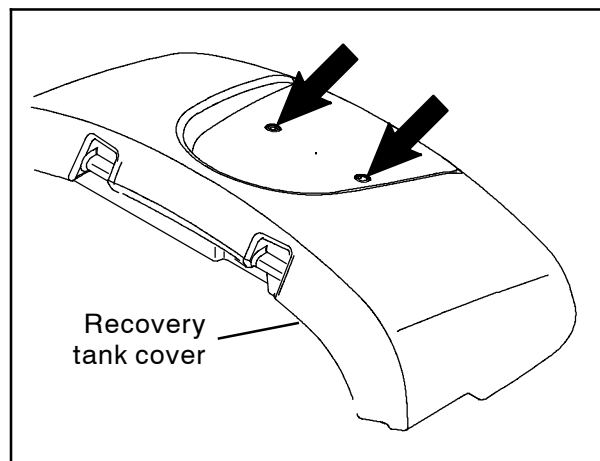


FIG. 1

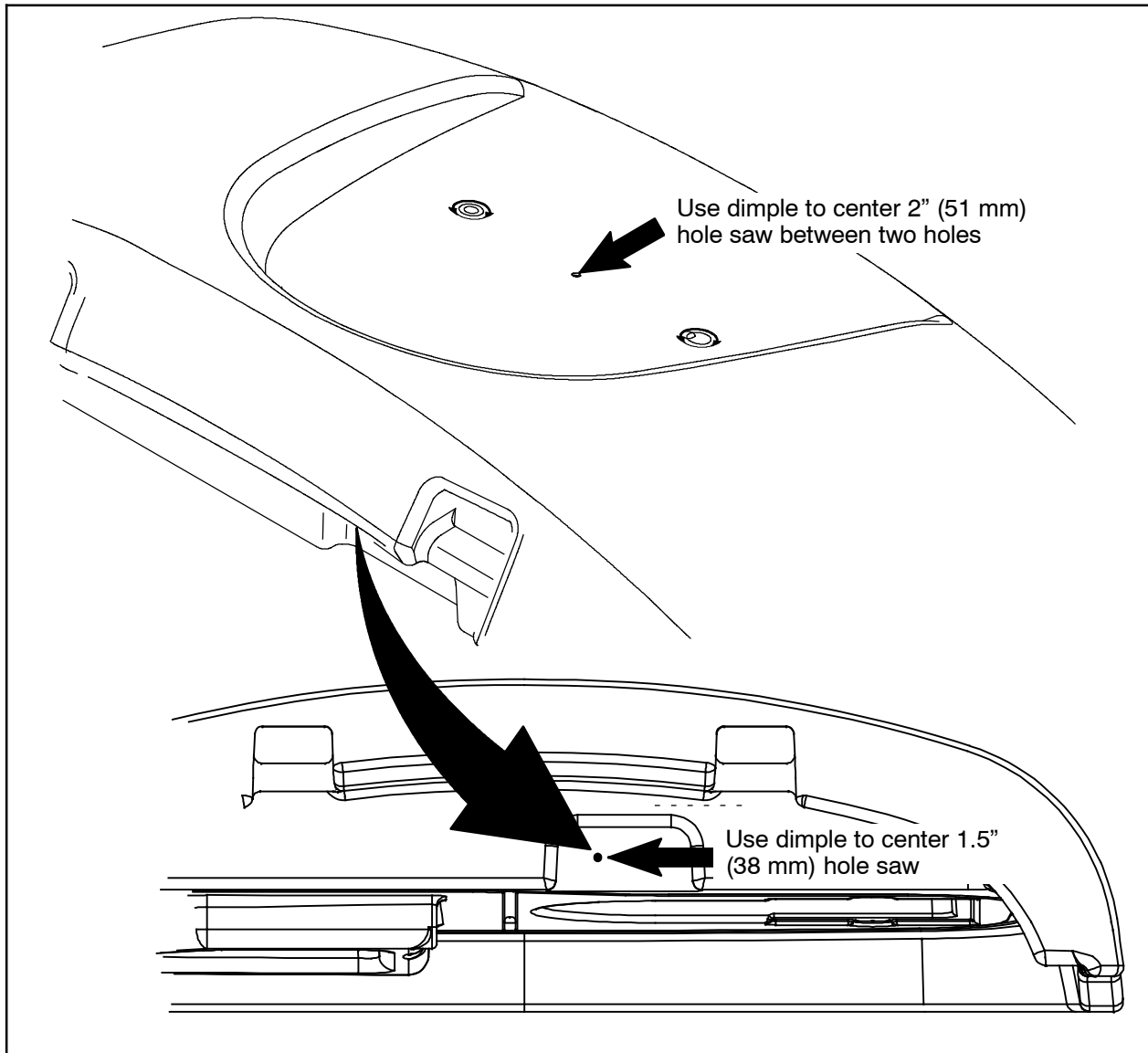


FIG. 2

2. Remove the recovery tank cover from the recovery tank. Set all mounting hardware aside.
3. Use a 2" (51 mm) hole saw to cut a hole through the top of the recovery tank cover. **Do Not** cut into the bottom of the recovery tank cover. (Fig. 2)
4. Use a 1.5" (38 mm) hole saw to cut a hole through the front of the recovery tank cover. (Fig. 2)

- Use two M5 pan screws (14), two flat washers (15), and two M5 hex nuts (16) to install the strobe light (1) onto the light module base (2). (Fig. 3)

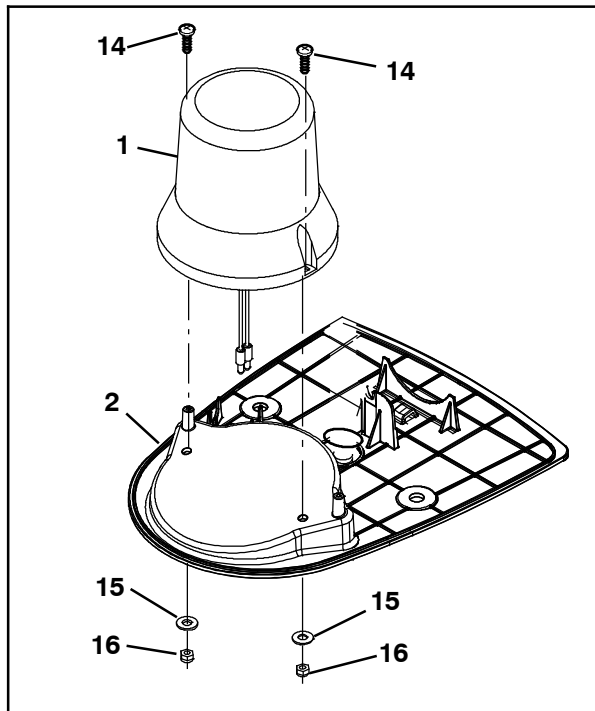


FIG. 3

- Use a cable tie (5), a hex screw (6), and a flat washer (7) to secure the backup alarm (4) to the light module base (2). (Fig. 4)

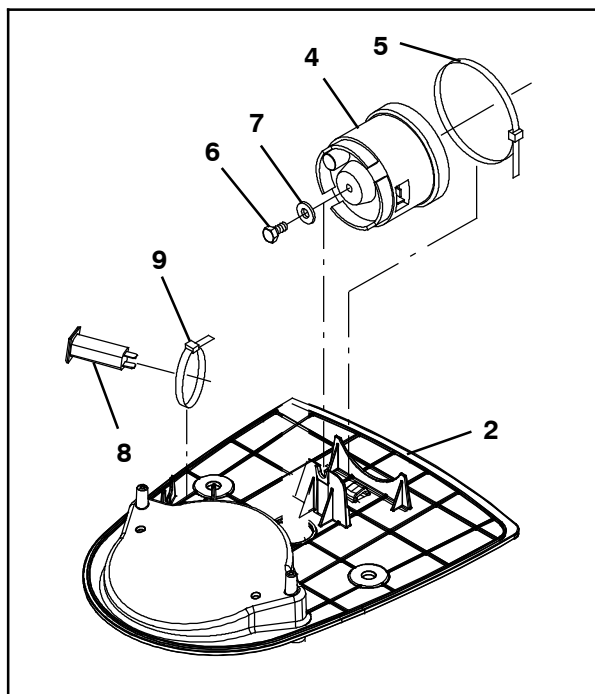


FIG. 4

- Use a cable tie (9) to secure one 2.5 Amp circuit breaker (8) to the light module base (2). (Fig. 4)

- Route the end of the alarm / light wire harness (10) with the single connector down through the module base (2), module base gasket (3), and the 2" (50 mm) hole and 1.5 (38 mm) hole in the recovery tank cover. (Fig. 5)

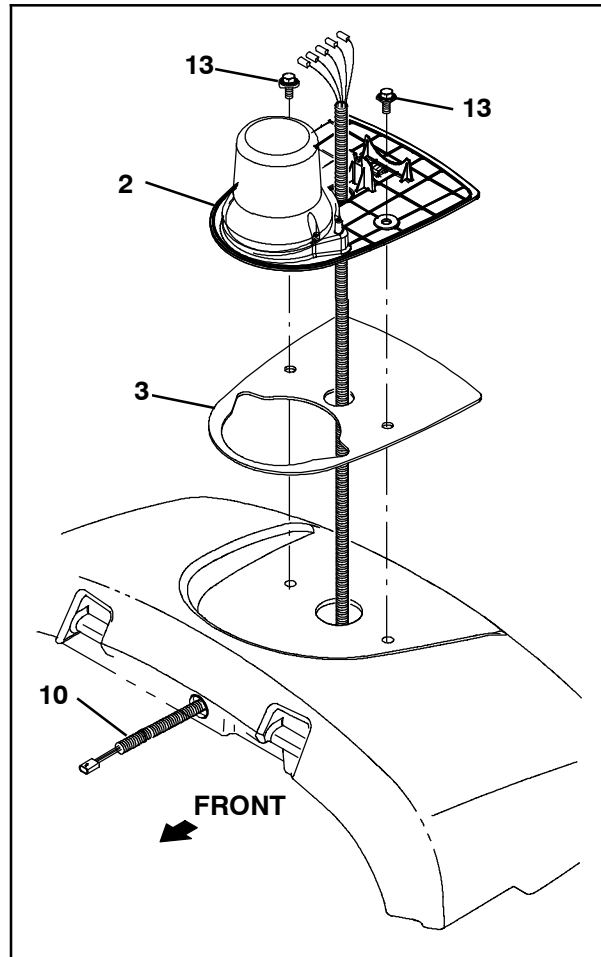


FIG. 5

- Use two M8 hex screws (13) to install the light module base (2) and module base gasket (3) onto the recovery tank cover. (Fig. 5)

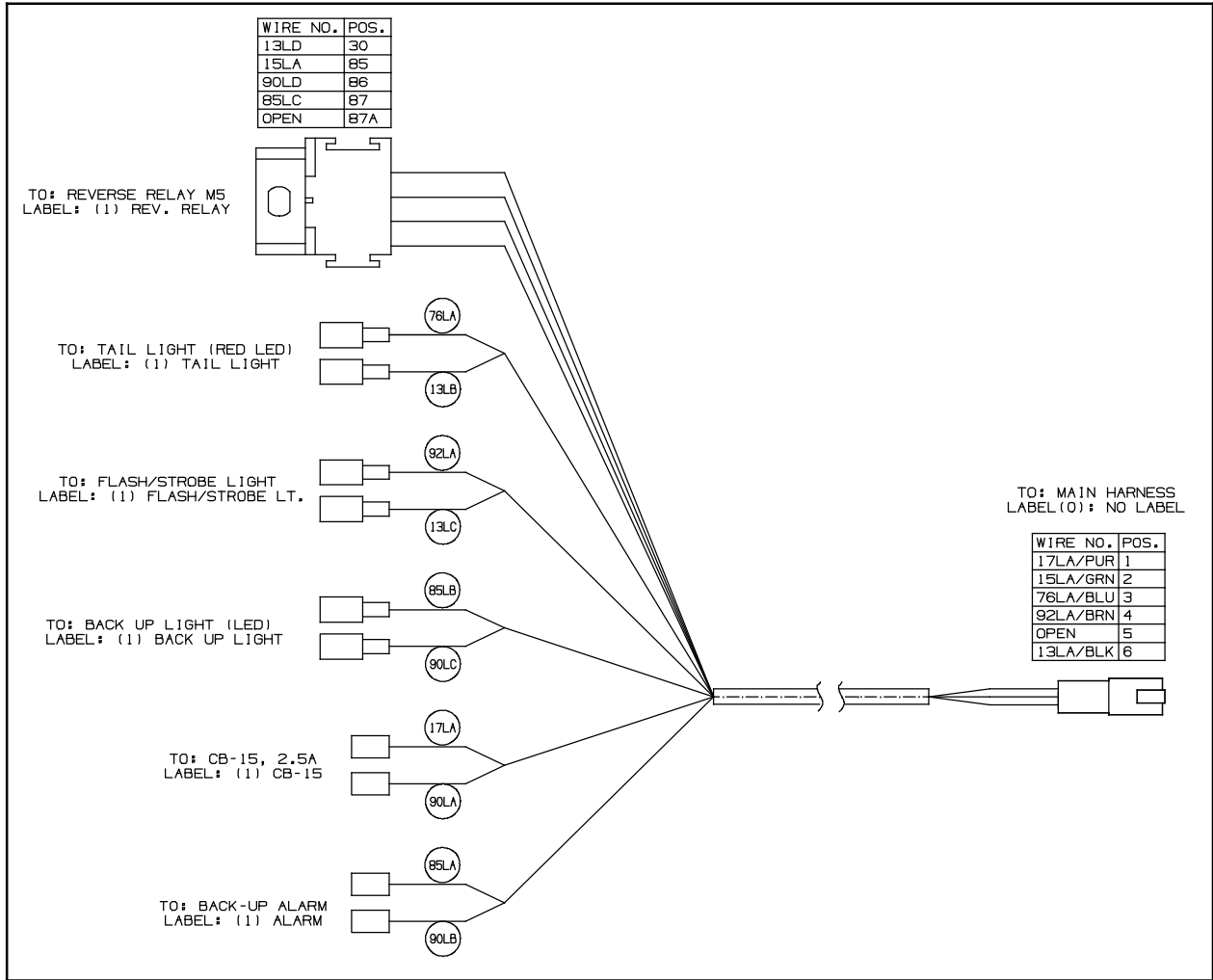


FIG. 6 - Alarm / Light Wire Harness

10. Connect the alarm / light wire harness (10) to the light (1), backup alarm (4), and 2.5 Amp circuit breaker (8). (Fig. 4 / Fig. 5 / Fig. 6)
11. Plug the 36VDC relay (21) into the alarm / light wire harness (10). (Fig. 6 / Fig. 7)



FIG. 7

12. Reinstall the recovery tank cover onto the recovery tank.

13. Route the alarm / light wire harness (10) through the hole in the top back end of the recovery tank and down to the main wire harness connector for the alarm / light wire harness. (Fig. 8 / Fig. 9)

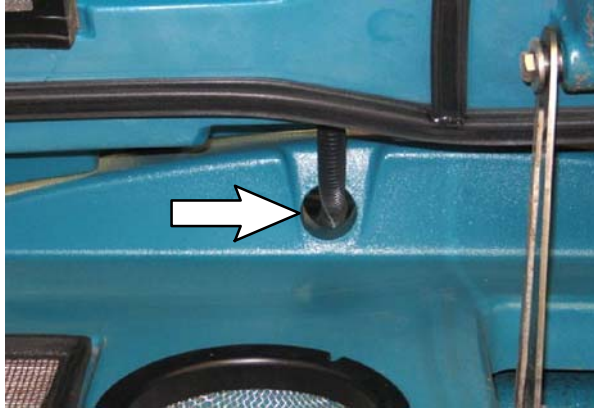


FIG. 8



FIG. 9

14. Connect the alarm / light wire harness (10) to the main wire harness. (Fig. 10 / Fig. 12)



FIG. 10

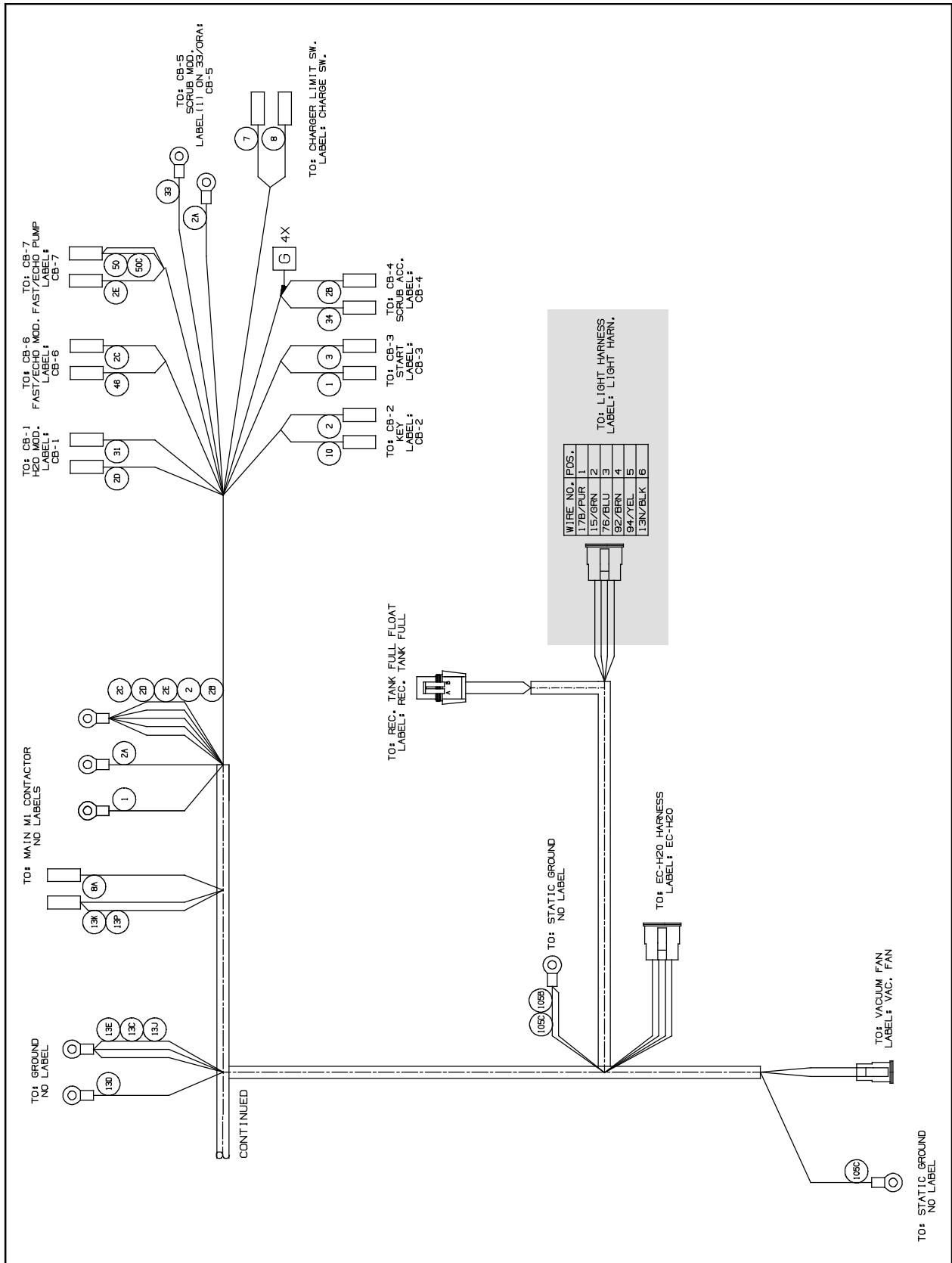


FIG. 12 - Main Wire Harness

- Use two pan screws (20) to install each LED light assembly (19) onto the light module cover (18). (Fig. 14)

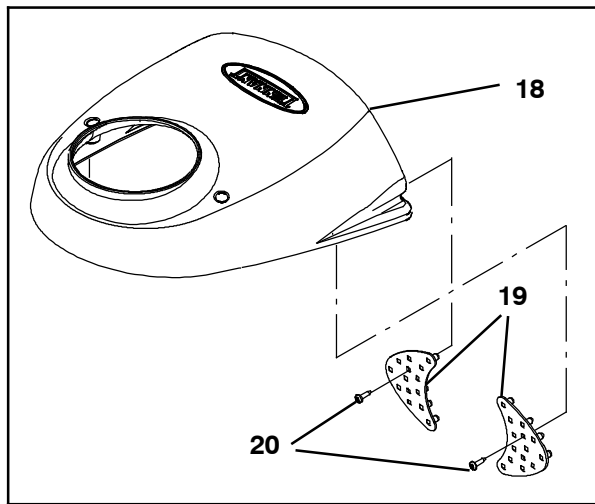


FIG. 14

- Connect the alarm / light wire harness (10) to both LED light assemblies (19). (Fig. 6 / Fig. 14)
- Use two pan screws (20) to install the light module cover (18) onto the rest of the light / alarm assembly. (Fig. 19)

NOTE: Complete Step 15 through Step 20 only if machine is not equipped with the optional front light kit. The switch (17) is already installed on machines equipped with the optional front light kit.

- Remove the hardware holding the control panel to the front shroud and set the hardware aside. (Fig. 15)
- Carefully pull the control panel from the front shroud. Take care to not break any wire connections when pulling the panel from the shroud. (Fig. 15)
- Remove the hole plug from the control panel and discard the plug. (Fig. 15)
- Insert the switch (17) into the control panel. (Fig. 15)
- Connect the main wire harness to the switch (17). (Fig. 11)
- Reinstall the control panel onto the front shroud. (Fig. 15)

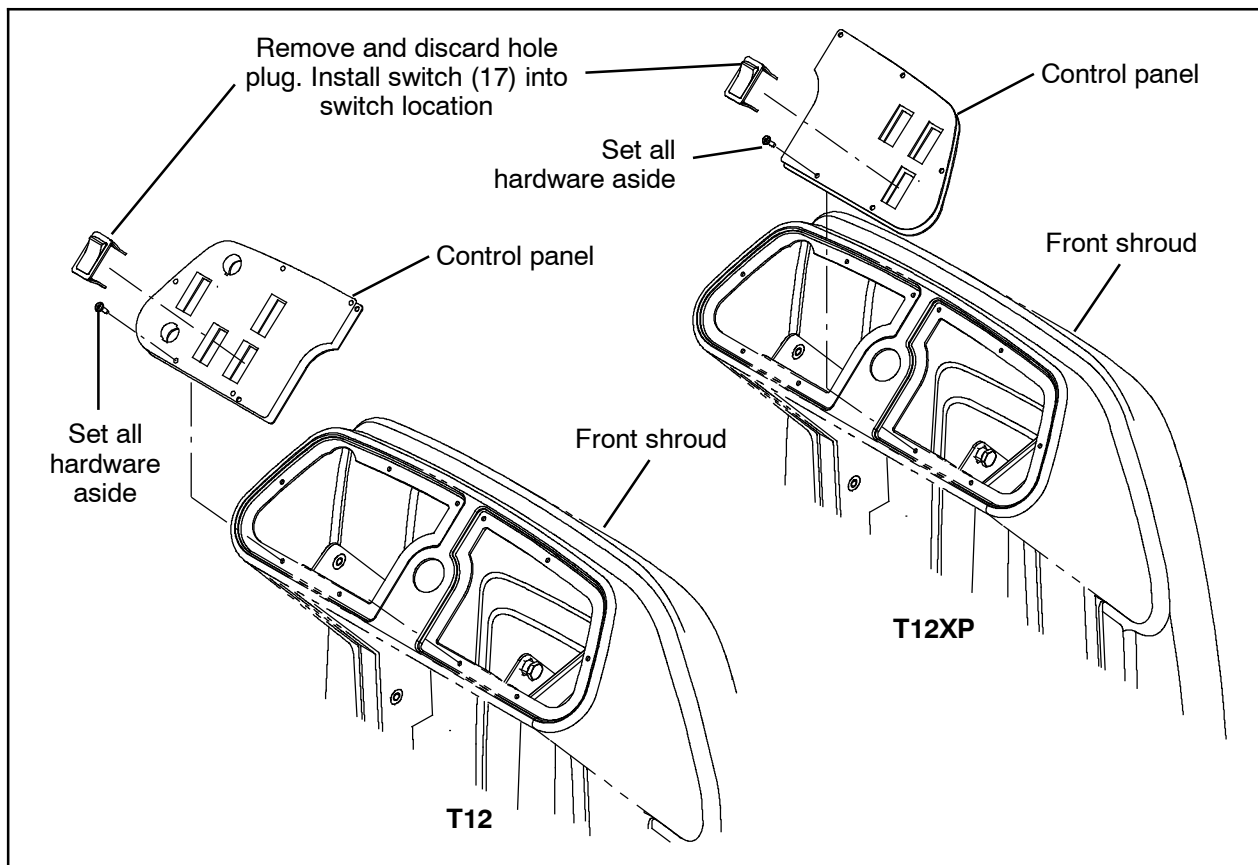


FIG. 15

24. Remove the access panel from the steering channel. (Fig. 16)



FIG. 16

25. Remove the M8 hex screw securing the bottom of the circuit breaker bracket to the machine. (Fig. 17)

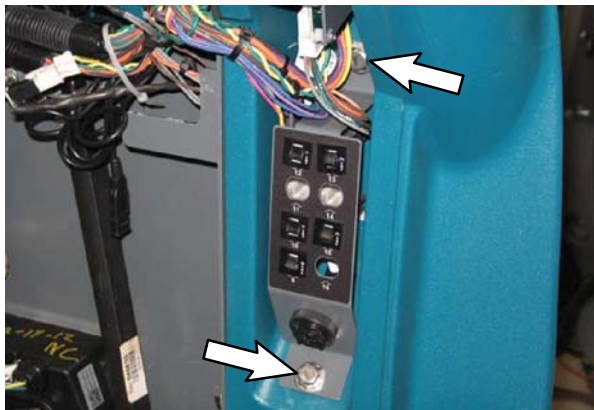


FIG. 17

26. Loosen the M8 hex screw securing the top of the circuit breaker bracket to the machine. (Fig. 17)
27. Pull circuit breaker bracket out far enough to access the main wire harness connectors located behind the bracket. (Fig. 17)

28. **Machines without front light kit option only:** Insert the 15- Amp circuit breaker (12) into circuit breaker location 12 in the circuit breaker bracket. (Fig. 8)

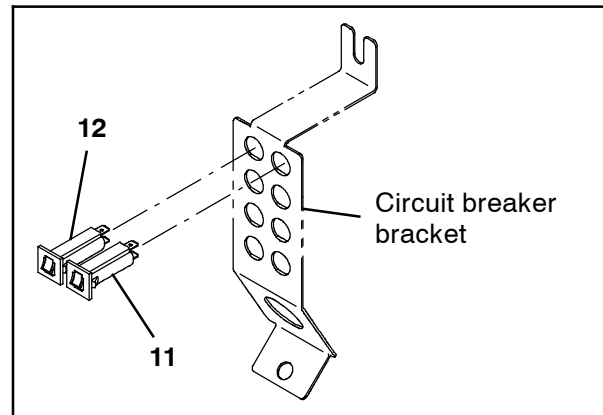


FIG. 18

29. Insert the 2.5 Amp circuit breaker (11) into circuit breaker location 13 in the circuit breaker bracket. (Fig. 8)
30. Connect the main wire harness to the previously installed circuit breaker(s). (Fig. 18 / Fig. 11)
31. Reinstall the M8 hex screw removed from the bottom of the circuit breaker bracket and tighten the M8 hex screw at the top of the circuit breaker bracket. (Fig. 17)
32. Reinstall the access panel onto the steering channel. (Fig. 16)
33. Reconnect the battery cable to the machine.
34. Start and test the machine. Position the operating light / hazard light switch to the ON position and operate the machine in both the forward and reverse directions. The strobe light and red LED taillights should function when the lights are turned on and the white reverse LED lights and alarm should function when the machine is in reverse.

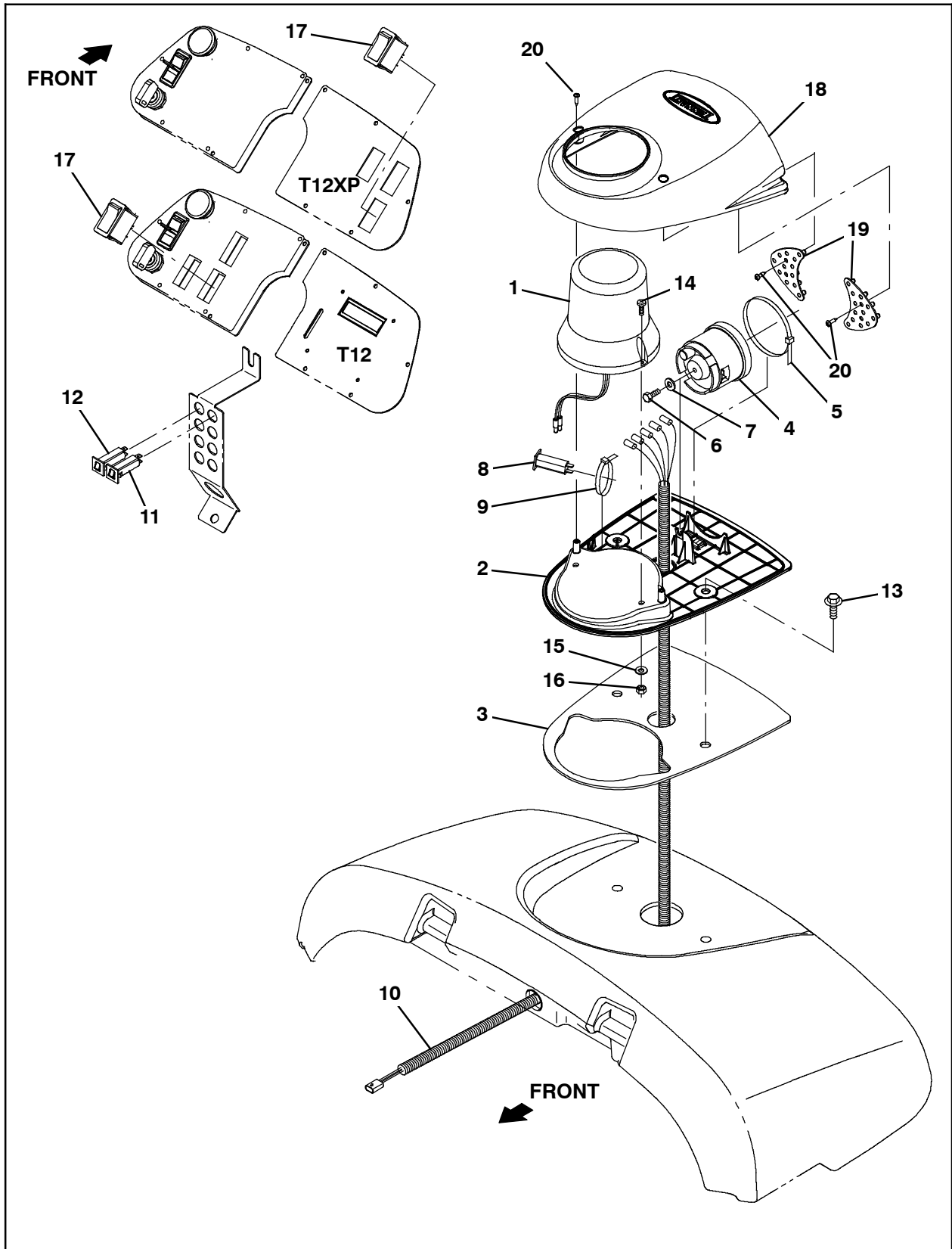


FIG. 19

Bill Of Materials For Light Kit, Strobe, Module, CI [T12] - 9010353

	Ref.	Tennant Part No.	Description	Qty.
▽		9010353	Light Kit, Strobe, Module, Ci [T12]	1
▲▽	1	1017250	Light, Strobe, Amb, 12- 48VDC, Rwk	1
▲▲		9000845	Lamp, Bulb, Strobe	1
▲▲		9000879	Lens, Amb, F/ Revl / Flasher	1
▲	2	1059938	Base, Module, Light	1
▲	3	1063263	Gasket, Base, Module	1
▲	4	1058694	Alarm, Backup, 12- 48VDC, Adj	1
▲	5	49263	Tie, Cable, Nyl, 11.4l .19w 3.0 Max D	1
▲	6	19315	Screw, Hex, .25- 20 X 0.50, G5	1
▲	7	32483	Washer, Flat, 0.25, SAE	1
▲	8	1064184	Circuit Breaker, 02.5a, Resettable	1
▲	9	49266	Tie, Cable, Nyl, 07.3l .19w 1.8 Max D	1
▲	10	1056979	Harness, Wire, Alarm / Light [T16]	1
▲	11	1064184	Circuit Breaker, 02.5a, Resettable	1
▲	12	1064188	Circuit Breaker, 15.0a, Resettable	1
▲	13	1020341	Screw, Hex, M8 X 1.25 X 20, SS, SEMS	2
▲	14	06933	Screw, Pan, Phl, M5 X 0.80 X 16, 4.8	2
▲	15	19066	Washer, Flat, 0.25b 0.56d .05, Pl, 10	2
▲	16	06549	Nut, Hex, Lock, M5 X 0.80, NI	2
▲	17	377084	Switch, Rocker, Prgrsv	1
▲	18	1062106	Cover, Module, Light	1
▲	19	1059342	Light Assy, LED	1
▲	20	222267	Screw, Pan, Phl, 06- 20 X 0.50, Fmg/Ab	6
		1027798	Lens, Red, F/ Revl / Flasher	1
		1027800	Lens, Blu, F/ Revl / Flasher	1
▲	21	398526	Relay, 36VDC, 005A, SPDT NO [Greenwich]	1
▲	22	55272	Terminal, Bullet, Mal, .157D, 12Ga	2
▲	23	C080140	Sleeve, Vyl, Flex, .23ID, Bulk (6 in)	1

TENNANT COMPANY
P. O. Box 1452
Minneapolis, MN 55440-1452